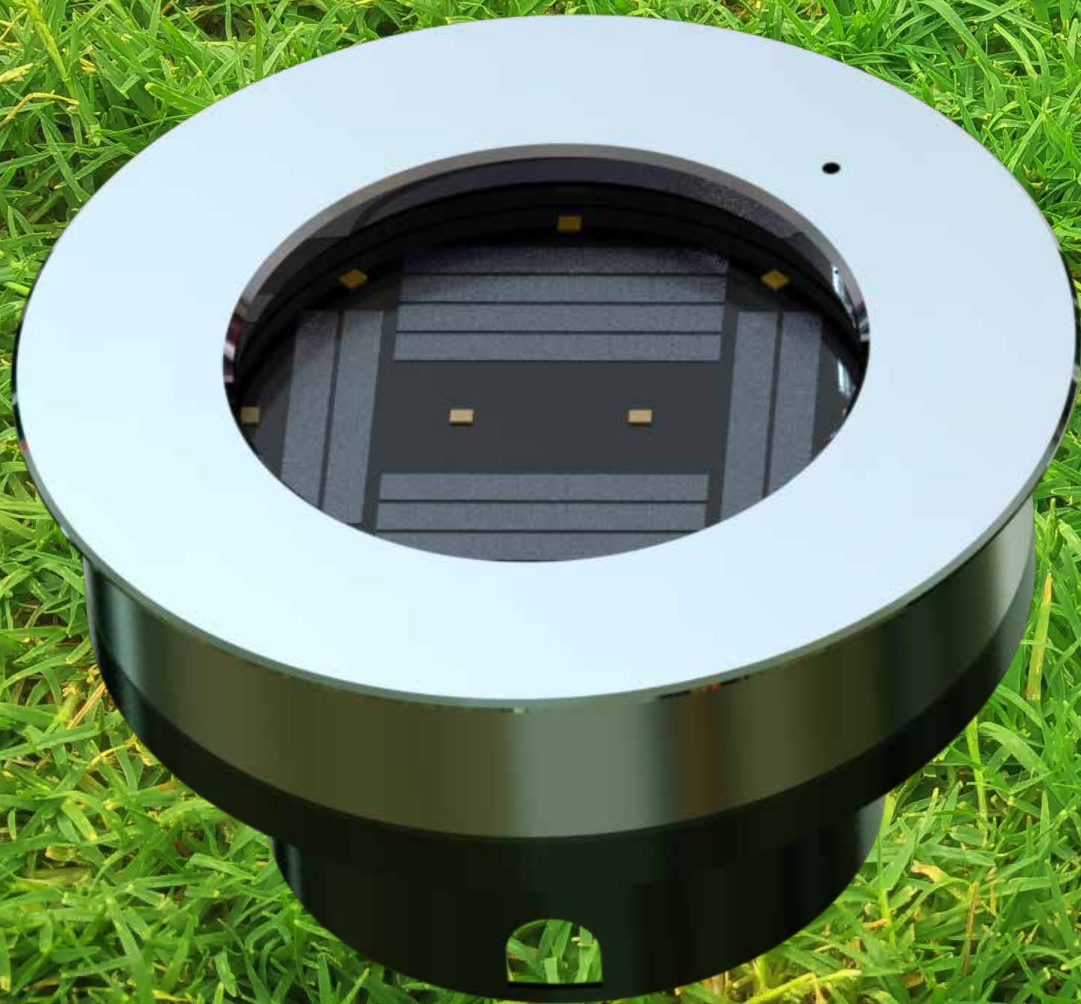


# Phoenix- LED Solar Recessed Underground Light

-Illuminating Paths with Sustainable Elegance



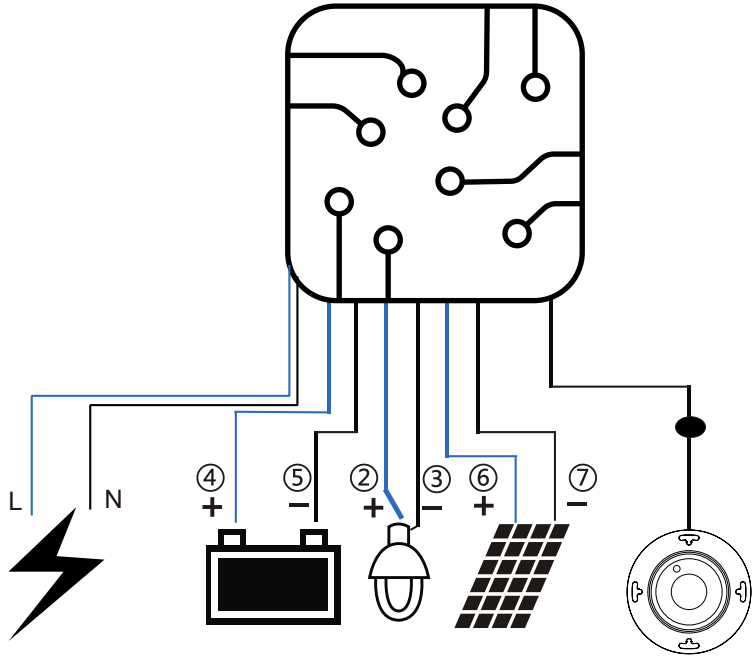
**shinetoo®**

Jiaxing Shinetoo Lighting Co.,Ltd  
Add:No.258, Xingchang Road, Xincheng Town, Xiuzhou District,  
Jiaxing, Zhejiang, China 314015

Tel : +86-573-8350-0001 Fax : +86-573-8350-0005  
Mobile : +86-138-1878-3129

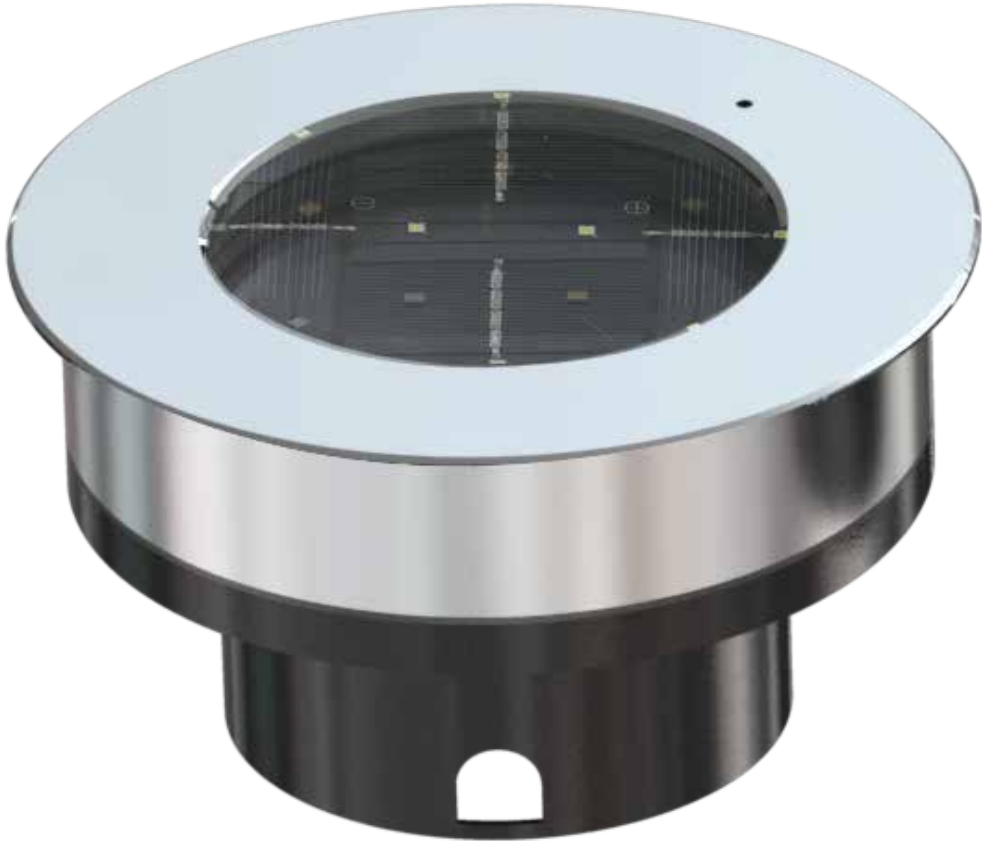
Email:Sales@stledlights.com  
www.stledlights.com

# Solar Charge Controller



# SHINETOO

Phoenix-LED Solar Recessed Underground Light



Innovative max power point tracking (MPPT) technology, tracking efficiency >99%



Motion detection for adapting dimming levels based on pedestrian needs



Full digital technology, high charge & discharge conversion efficiency up to 96%



IP69K, Strong and durable aluminum case



Precision constant current control supports from 50mA up to 3000mA



Full automatic electronic protection



5 Step dimming can be programmed from 0% to 100% levels



Low voltage disconnect (LVD) and reconnect (LVR) settings in order to keep battery life healthy



Remote control operation

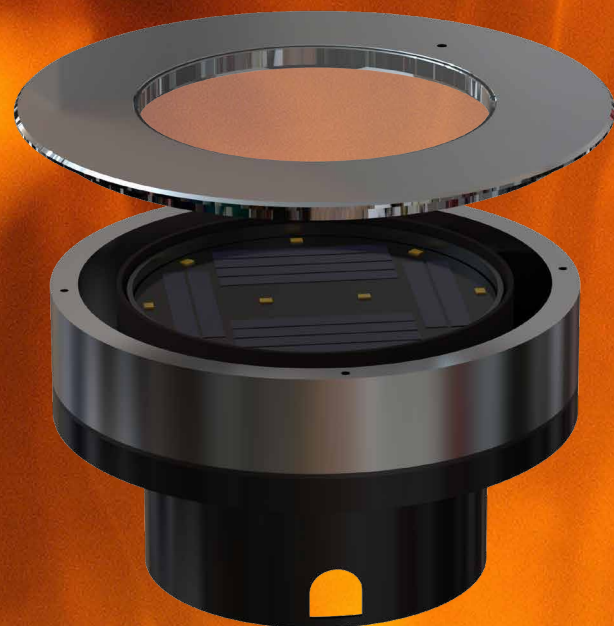
### Finish Color Codes

- 01	- 02	- 03	- 05	- 06
Black	Dark Grey	White	Matt Silver	Bronze
RAL 9011	RAL 7043	RAL 9003	RAL 9006	RAL 6014

## Super strong technology:

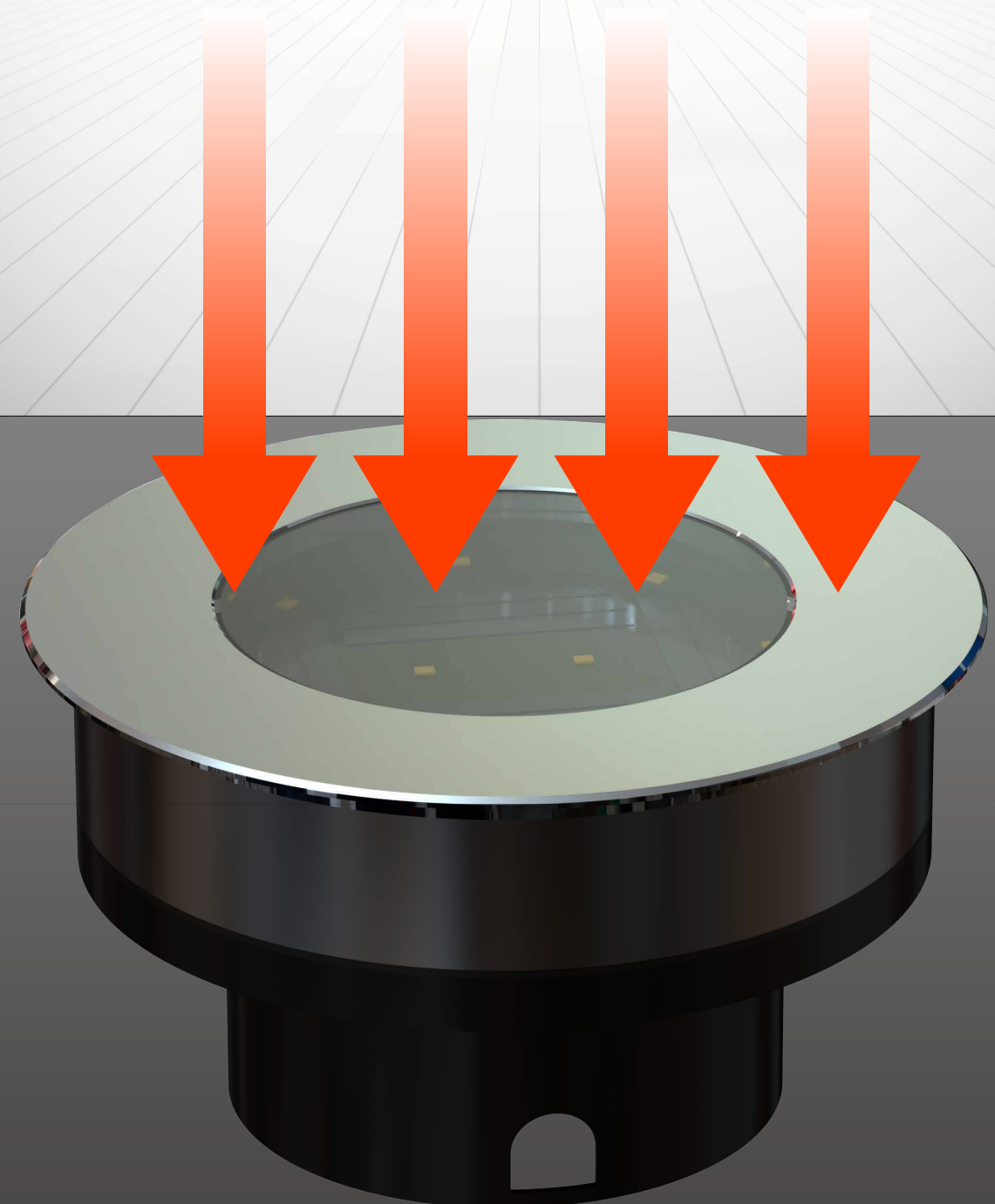
Weld tempered ultra-clear glass and 2205 stainless steel at a high temperature of 1200°C. The advantage is that the strength of tempered glass can be increased by more than 3 times.

Its applicable environment is in the range of -40°C to 180°C, and its protection can reach more than 30 years.



# It is more than 3 times stronger

than the original 5mm tempered glass in  
terms of pressure resistance



## SPECIFICATIONS

### Solar Style

<b>Model Number</b>	ST-Phoenix-PRO	ST-Phoenix-ST
<b>Power Consumption</b>	Preset 0.2w	Preset 0.2w
<b>Battery Capacity</b>	15AH 3.7V	15AH 3.7V
<b>Solar Panel Power</b>	Pmax 1.2W	Pmax 1.2W
<b>Working Mode</b>	MAX > 40lm lighting	MAX > 40lm lighting
<b>Rainy Day</b>	21days	21days
<b>Photometric Options</b>	Aerial lens	Flood lens
<b>Color Temperature</b>	2500-6500k	2500-6500k
<b>IP&amp;IK Protection</b>	IP69K & IK10	IP69K & IK10
<b>Explosion-proof certification level</b>	Ex db IIB T6 Gb	Ex db IIB T6 Gb
<b>Housing Material</b>	2205 & 304 Stainless steel+PC+Glass	2205 & 304 Stainless steel+PC+Glass
<b>Housing Color</b>	Sliver	Sliver
<b>Dimentions</b>	170mm×170mm×94mm Φ155mm	170mm×170mm×94mm Φ155mm
<b>Warranty</b>	max 8 years	max 8 years
<b>Operating Temperature</b>	-10°C~+50°C	-10°C~+50°C
<b>Irradiation Distance</b>	≤2000m	/

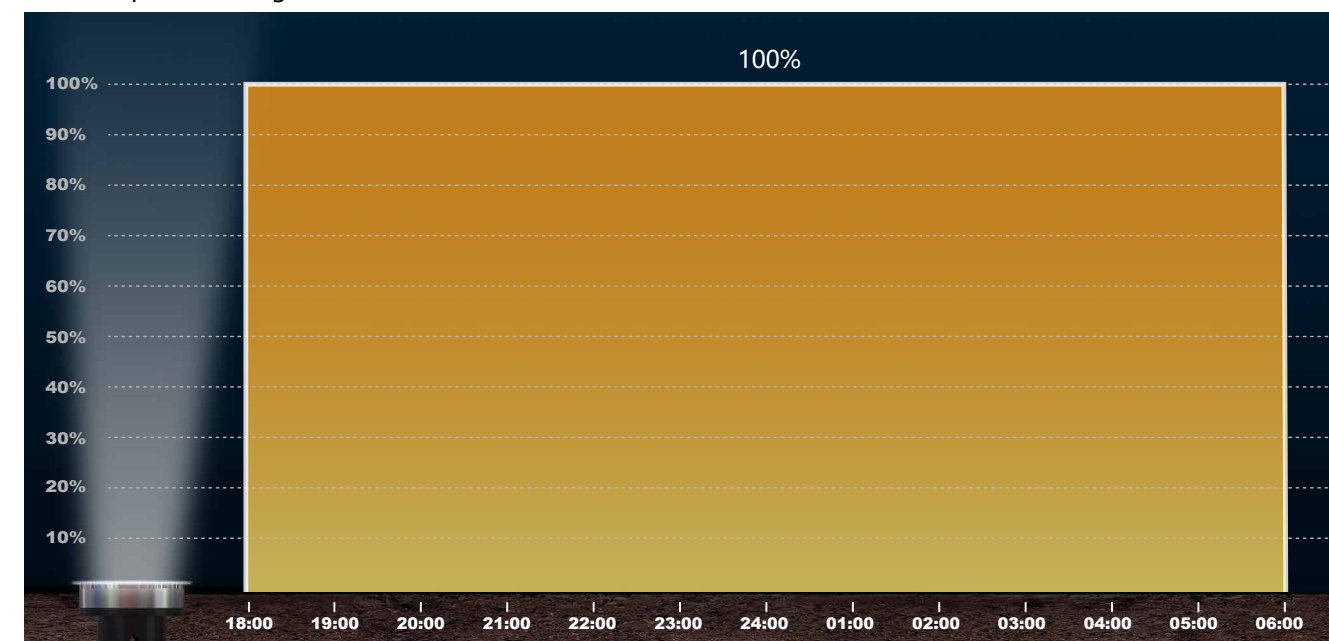
### Solar+AC Type (Supplement)

<b>Model Number</b>	ST-Phoenix-PRO-AC	ST-Phoenix-ST-AC
<b>Power Consumption</b>	Preset 0-10w	Preset 0-10w
<b>Battery Capacity</b>	15AH 3.7V	15AH 3.7V
<b>Solar Panel Power</b>	Pmax 1.2W	Pmax 1.2W
<b>Working Mode</b>	MAX > 0-2000lm lighting	MAX > 40lm lighting
<b>Photometric Options</b>	Aerial lens	Flood lens
<b>Color Temperature</b>	2500-6500k	2500-6500k
<b>IP&amp;IK Protection</b>	IP69K & IK10	IP69K & IK10
<b>Explosion-proof certification level</b>	Ex db IIB T6 Gb	Ex db IIB T6 Gb
<b>Housing Material</b>	2205 & 304 Stainless steel+PC+Glass	2205 & 304 Stainless steel+PC+Glass
<b>Housing Color</b>	Sliver	Sliver
<b>Dimentions</b>	170mm×170mm×94mm Φ155mm	170mm×170mm×94mm Φ155mm
<b>Warranty</b>	max 8 years	max 8 years
<b>Operating Temperature</b>	-10°C~+50°C	-10°C~+50°C
<b>Irradiation Distance</b>	≤2000m	/

## Control scheme

### Intelligent module optical control scheme

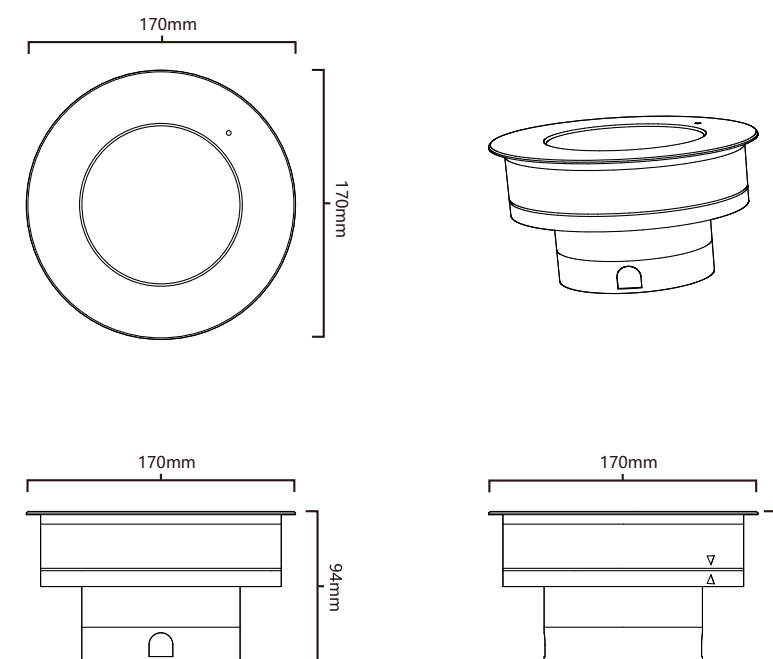
The power can be controlled remotely or manually  
 Intelligent power reduction is a fixed parameter and cannot be adjusted  
 For example, the sun goes down at 18:00



### MPPT Optical control scheme

Intelligent power down adjustable.

## DIMENSIONS





shinetoo®

Jiaying Shinetoo Lighting Co.,Ltd(China Factory)

Add:No.258, Xingchang Road, Xincheng Town, Xiuzhou District,  
Jiaying, Zhejiang, China 314015

Tel : +86-573-8350-0001 Fax : +86-573-8350-0005

Mobile : +86-138-1878-3129

Email:Sales@stledlights.com